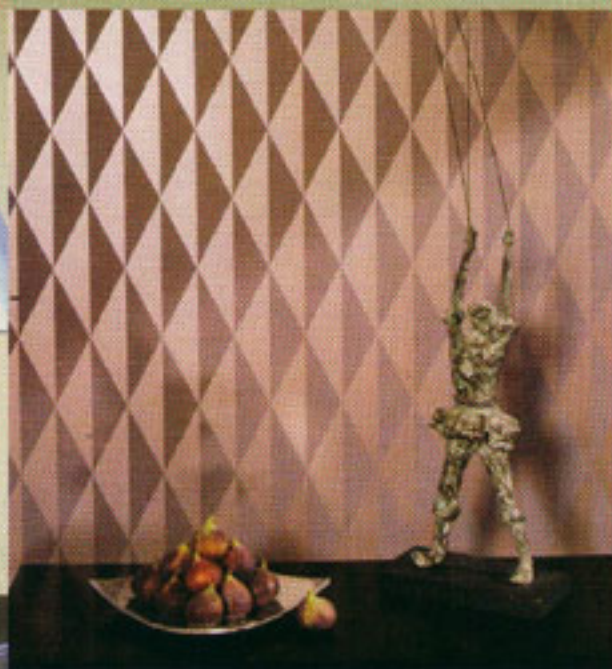
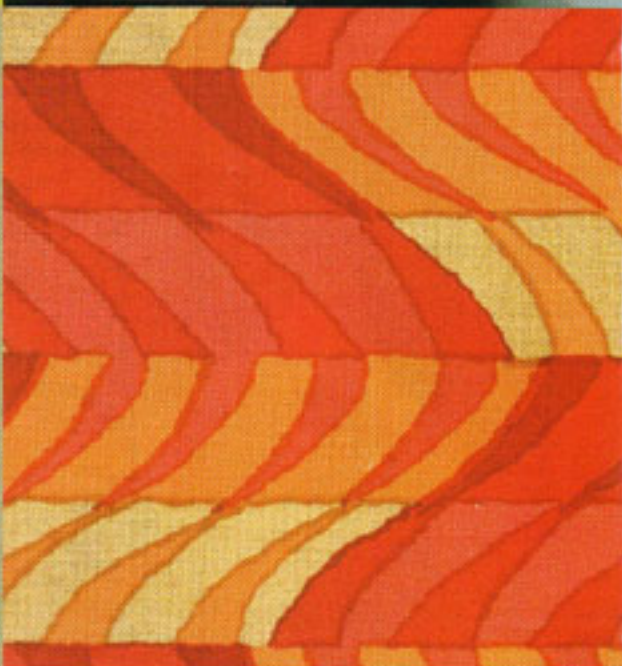




USEFUL CONTACTS
 Fired Earth 01295 814 300
 Ray Murn 020 7736 9876
 Chameleon Collection 01789 762857
 GP&J Baker 01202 266 700
 Dulux 01753 550 555
 Farrow & Ball 01202 876 141
 Knickerbean 0845 130 5900
 Crown Trade 0870 241 6457
 Ornamenta 020 7591 0077



CLOCKWISE FROM TOP LEFT: Pillar fabric in colour 03, 100% linen, 137cm (54") wide, 82cm (32 1/4") repeat, £45 per m, GP&J Baker; Harebell fabric in colour 01, 51% linen 37% cotton 12% nylon, 137cm (54") wide, 74cm (29") repeat, £42 per m, GP&J Baker; Cocktail matt emulsion, £20.99 for 2.5L, Fired Earth; Mistral fabric in colour 04, 51% linen 37% cotton 12% nylon, 137cm (54") wide, 41cm (16") repeat, £42 per m, GP&J Baker; Shagreen matt emulsion above dado, Charleston matt emulsion below, £20.99 for 2.5L, Fired Earth; Vice Versa handprinted wallpaper, 52cm (20 1/2") wide, 25cm (9 3/4") repeat, £155 per roll, Ornamenta; Atsuko fabric in colour 01, 100% linen, 137cm (54") wide, 81cm (32") repeat, £45 per m, GP&J Baker; Toulouse fabric in Kiwi, 70% cotton 30% polyester, 137cm (54") wide, 4.5cm (1 3/4") repeat, £22.95 per m, Knickerbean.